

Plans and drawings relevant to reports submitted to Western Area Planning Committee

Wednesday 17th September 2025 at 6.30pm

**At Council Chamber, Council Offices, Market Street,
Newbury, RG14 5LD**

&

And via Zoom

[to be read in conjunction with the main agenda]

Please note:

- *All drawings are copied at A4 and consequently are not scalable*
- *Most relevant plans have been included – however, in some cases, it may be necessary for the case officer to make a selection*
- *All drawings are available to view at www.westberks.gov.uk*

25/00931/FUL

Waitrose

Oxford Road

Newbury

RG14 1NB

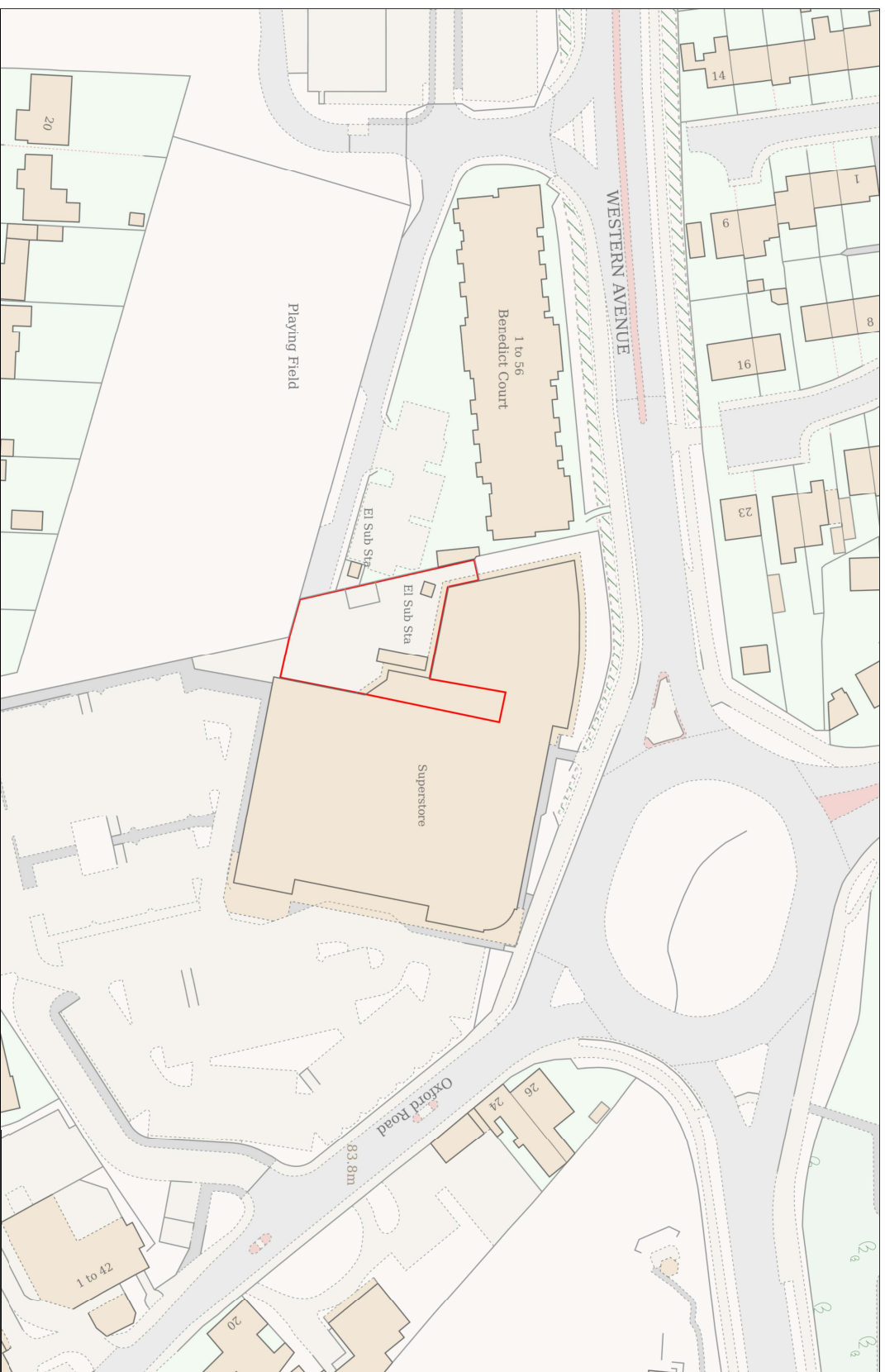
Location Plan

Site Address: Waitrose, Waitrose, Oxford Road, Newbury, RG14 1NB



Date Produced: 16-Apr-2025

Scale: 1:1250 @A4



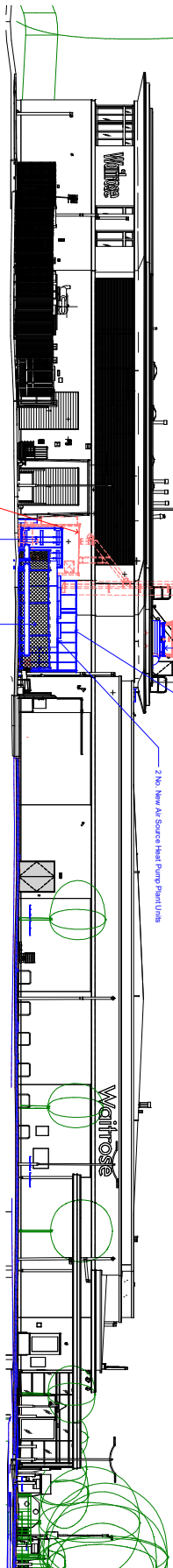
Planning Portal Reference: PP-13386298v1



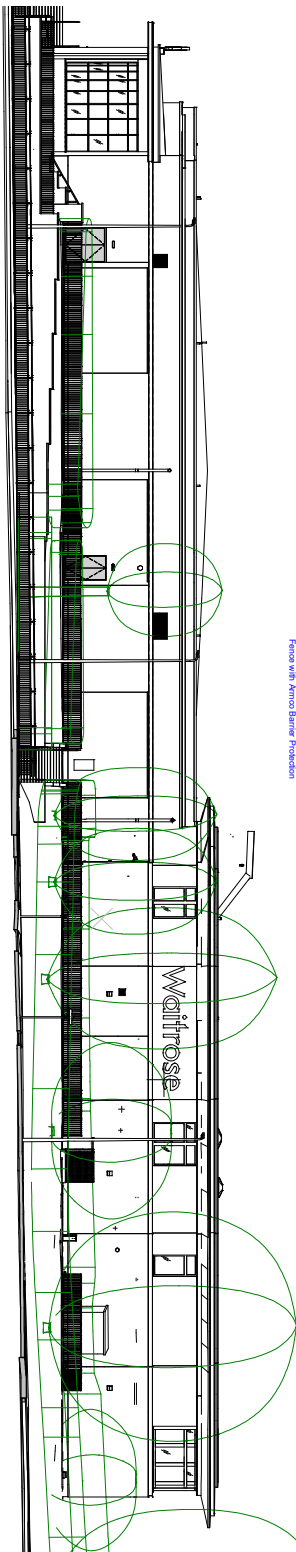
[illegible]



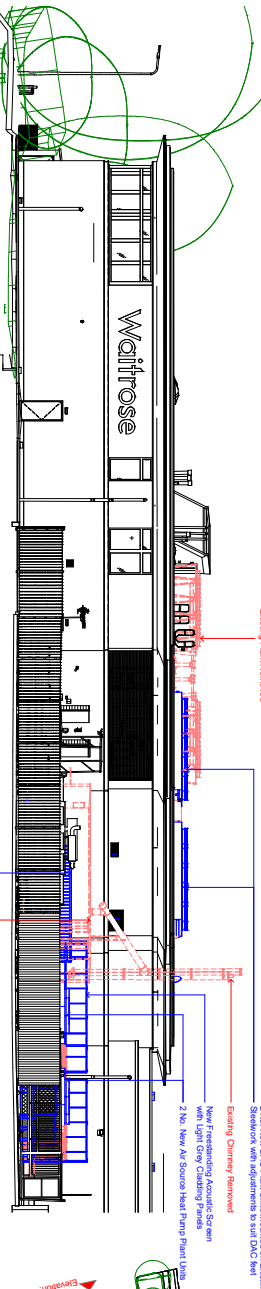
Proposed East Elevation
1:100



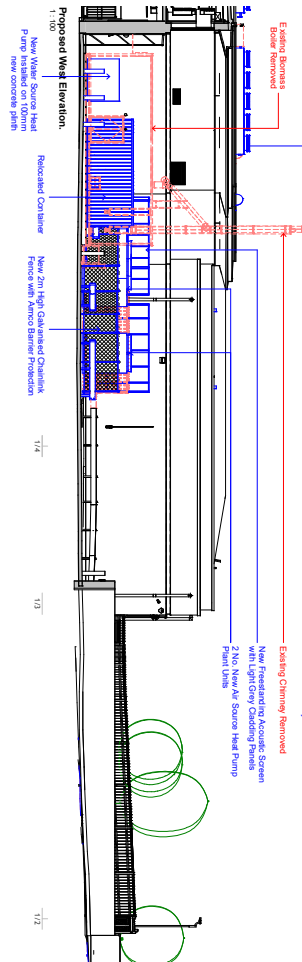
Proposed South Elevation
1:100



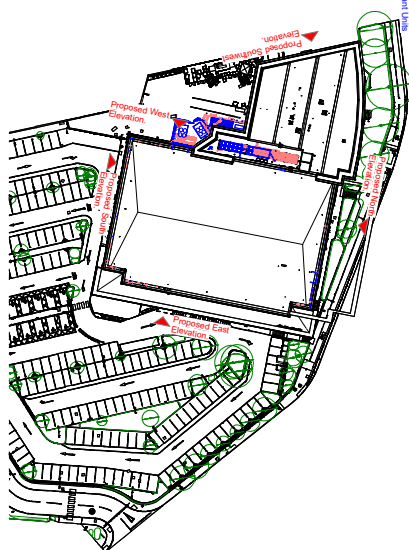
Proposed North Elevation
1:100



Proposed Southwest Elevation
1:100



Proposed West Elevation
1:100



Key Plan - Proposed External Elevations
1:500

Rev.	Description	Date	By
1	Issue for planning	10/03/23	GA
2	Issue for planning	10/03/23	GA
3	Issue for planning	10/03/23	GA
4	Issue for planning	10/03/23	GA

Copyright © 2023 Farrell & Clark Architects Ltd. All rights reserved.

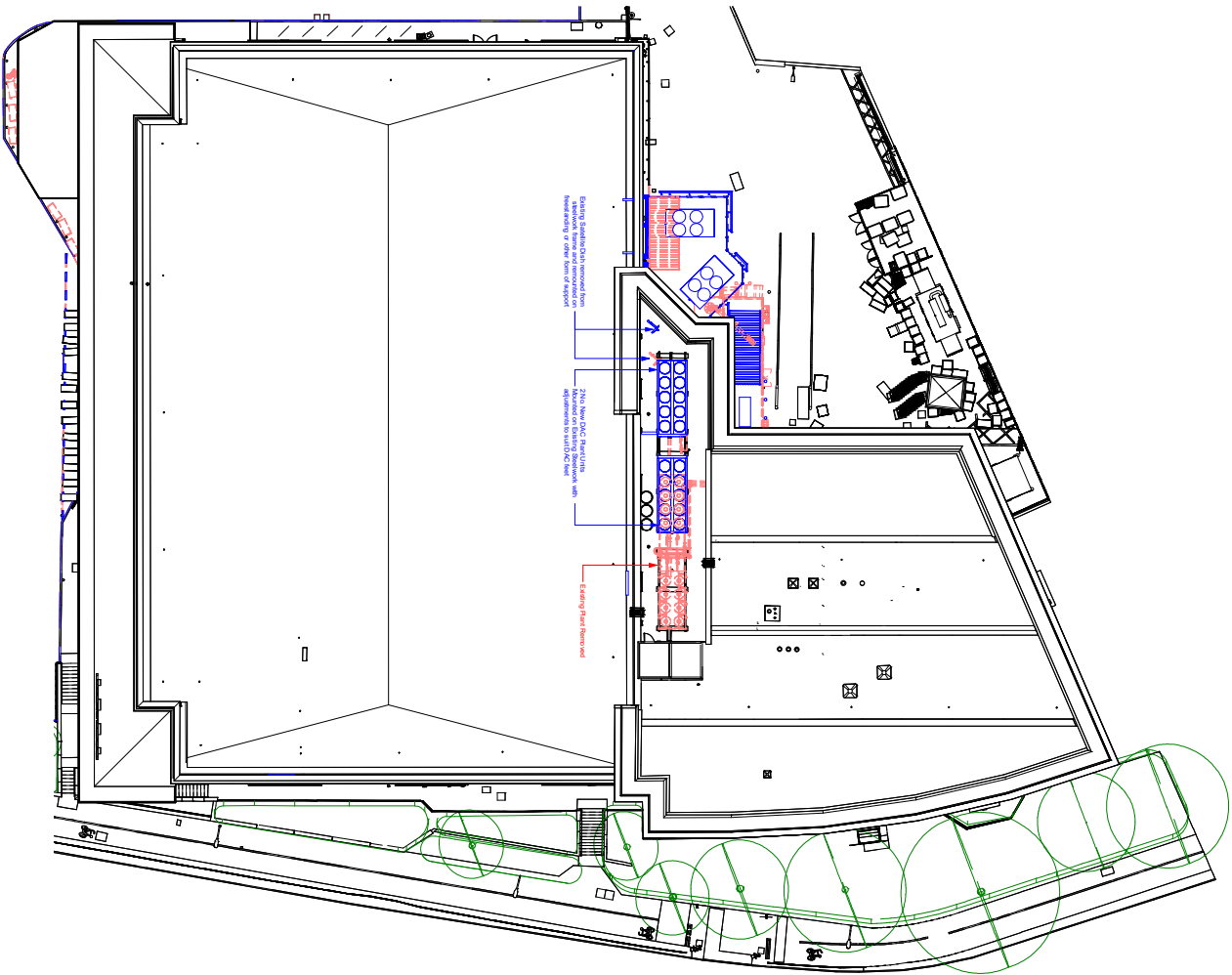


Farrell & Clark
Architects
100337 - 141, 2025

Project: 676 Waitrose Newbury
100337 - 141, 2025

Title: Proposed External Elevations
100337 - 141, 2025

Drawn: GA
Check: GA
Scale: As indicated and
Described
Proposed Elevations: April 2024



Farrell & Clark Ltd © Do not scale from this drawing			
Rev.	Description	Date	By
001	Issue for Design	20/08/24	GA
002	Issue for Construction	20/08/24	GA
003	Issue for Construction	20/08/24	GA
004	Issue for Construction	20/08/24	GA
005	Issue for Construction	20/08/24	GA
006	Issue for Construction	20/08/24	GA
007	Issue for Construction	20/08/24	GA
008	Issue for Construction	20/08/24	GA
009	Issue for Construction	20/08/24	GA
010	Issue for Construction	20/08/24	GA
011	Issue for Construction	20/08/24	GA
012	Issue for Construction	20/08/24	GA
013	Issue for Construction	20/08/24	GA
014	Issue for Construction	20/08/24	GA
015	Issue for Construction	20/08/24	GA
016	Issue for Construction	20/08/24	GA
017	Issue for Construction	20/08/24	GA
018	Issue for Construction	20/08/24	GA
019	Issue for Construction	20/08/24	GA
020	Issue for Construction	20/08/24	GA
021	Issue for Construction	20/08/24	GA
022	Issue for Construction	20/08/24	GA
023	Issue for Construction	20/08/24	GA
024	Issue for Construction	20/08/24	GA
025	Issue for Construction	20/08/24	GA
026	Issue for Construction	20/08/24	GA
027	Issue for Construction	20/08/24	GA
028	Issue for Construction	20/08/24	GA
029	Issue for Construction	20/08/24	GA
030	Issue for Construction	20/08/24	GA
031	Issue for Construction	20/08/24	GA
032	Issue for Construction	20/08/24	GA
033	Issue for Construction	20/08/24	GA
034	Issue for Construction	20/08/24	GA
035	Issue for Construction	20/08/24	GA
036	Issue for Construction	20/08/24	GA
037	Issue for Construction	20/08/24	GA
038	Issue for Construction	20/08/24	GA
039	Issue for Construction	20/08/24	GA
040	Issue for Construction	20/08/24	GA
041	Issue for Construction	20/08/24	GA
042	Issue for Construction	20/08/24	GA
043	Issue for Construction	20/08/24	GA
044	Issue for Construction	20/08/24	GA
045	Issue for Construction	20/08/24	GA
046	Issue for Construction	20/08/24	GA
047	Issue for Construction	20/08/24	GA
048	Issue for Construction	20/08/24	GA
049	Issue for Construction	20/08/24	GA
050	Issue for Construction	20/08/24	GA
051	Issue for Construction	20/08/24	GA
052	Issue for Construction	20/08/24	GA
053	Issue for Construction	20/08/24	GA
054	Issue for Construction	20/08/24	GA
055	Issue for Construction	20/08/24	GA
056	Issue for Construction	20/08/24	GA
057	Issue for Construction	20/08/24	GA
058	Issue for Construction	20/08/24	GA
059	Issue for Construction	20/08/24	GA
060	Issue for Construction	20/08/24	GA
061	Issue for Construction	20/08/24	GA
062	Issue for Construction	20/08/24	GA
063	Issue for Construction	20/08/24	GA
064	Issue for Construction	20/08/24	GA
065	Issue for Construction	20/08/24	GA
066	Issue for Construction	20/08/24	GA
067	Issue for Construction	20/08/24	GA
068	Issue for Construction	20/08/24	GA
069	Issue for Construction	20/08/24	GA
070	Issue for Construction	20/08/24	GA
071	Issue for Construction	20/08/24	GA
072	Issue for Construction	20/08/24	GA
073	Issue for Construction	20/08/24	GA
074	Issue for Construction	20/08/24	GA
075	Issue for Construction	20/08/24	GA
076	Issue for Construction	20/08/24	GA
077	Issue for Construction	20/08/24	GA
078	Issue for Construction	20/08/24	GA
079	Issue for Construction	20/08/24	GA
080	Issue for Construction	20/08/24	GA
081	Issue for Construction	20/08/24	GA
082	Issue for Construction	20/08/24	GA
083	Issue for Construction	20/08/24	GA
084	Issue for Construction	20/08/24	GA
085	Issue for Construction	20/08/24	GA
086	Issue for Construction	20/08/24	GA
087	Issue for Construction	20/08/24	GA
088	Issue for Construction	20/08/24	GA
089	Issue for Construction	20/08/24	GA
090	Issue for Construction	20/08/24	GA
091	Issue for Construction	20/08/24	GA
092	Issue for Construction	20/08/24	GA
093	Issue for Construction	20/08/24	GA
094	Issue for Construction	20/08/24	GA
095	Issue for Construction	20/08/24	GA
096	Issue for Construction	20/08/24	GA
097	Issue for Construction	20/08/24	GA
098	Issue for Construction	20/08/24	GA
099	Issue for Construction	20/08/24	GA
100	Issue for Construction	20/08/24	GA

Construction Design Management Regulations 2015



Scale: 1:200

THIS DRAWING IS THE PROPERTY OF FARRELL & CLARK LTD. IT IS TO BE USED ONLY FOR THE PROJECT AND SITE SPECIFICALLY IDENTIFIED HEREIN. IT IS NOT TO BE REPRODUCED OR TRANSMITTED IN ANY FORM OR BY ANY MEANS, ELECTRONIC OR MECHANICAL, INCLUDING PHOTOCOPYING, RECORDING, OR BY ANY INFORMATION STORAGE AND RETRIEVAL SYSTEM, WITHOUT THE WRITTEN PERMISSION OF FARRELL & CLARK LTD.

Farrell & Clark
Architects
LEEDS
LONDON

0113 299 8832
0203 386 7029
www.farrellandclark.co.uk

Status: Planning

Client: John Lewis Partnership

Project: 676 Waitrose Newbury
10337 - LAL 2025

Title: Proposed Roof Plan

Drawn: GA Date: August 2024

Checked: GA Scale: 1 : 200

Drawing No.: 676-10337-FA-CR-RD-A-47-04

Description: Proposed Roof ARP-P-02